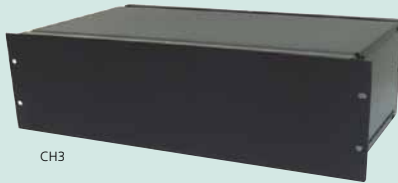
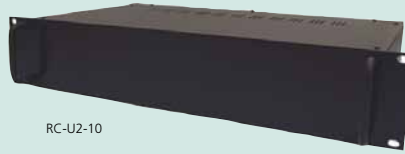


Chassis Boxes



CH3



RC-U2-10



EC-3

CH SERIES - MIDDLE ATLANTIC



MODEL	HEIGHT	DEPTH	
CH1	1.75" (1 Space)	10"	
CH2	3.5" (3 Space)	10"	
CH3	5.25" (3 Space)	10"	

RC SERIES - CIRCUIT-TEST

CIRCUIT-TEST

MODEL	HEIGHT	DEPTH	
RC-U1-10	1.75" (1 Space)	10"	
RC-U1-12	1.75" (1 Space)	12"	
RC-U2-10	3.5" (2 Space)	10"	
RC-U2-12	3.5" (2 Space)	12"	

EC SERIES - ECONOMY

MODEL	HEIGHT	DEPTH	
EC-1	1.75" (1 Space)	6"	
EC-2	3.5" (2 Space)	6"	
EC-3	5.25" (3 Space)	6"	

CONSTRUCTION	FRONT PANEL	TOP PANEL	BOTTOM PANEL	SIDE PANELS	HANDLES	ASSEMBLY REQUIRED
CH SERIES	Black Anodized 16 AWG Steel	Black Anodized 16 AWG Steel	Black Anodized 16 AWG Steel	Black Anodized 16 AWG Steel	No	No
RC SERIES	Black Anodized 12 AWG Aluminum	Black Powder Coat 18 AWG Steel Vented	Black Powder Coat 18 AWG Steel	Black Powder Coat 19 AWG Steel	Yes	Yes
EC SERIES	Black Powder Coat 16 AWG Steel	Black Powder Coat 20 AWG Steel	Black Powder Coat 16 AWG Steel	Black Powder Coat 20 AWG Steel	No	No

Shelves



- Black powder-coat finish
- 16 AWG steel



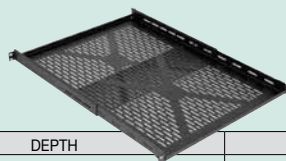
STANDARD

MODEL	HEIGHT	DEPTH	CAPACITY
U1	1.75" (1Space)	11"	35lbs
SS	1.75" (1 Space), Sliding	14"	50lbs
U2	3.5" (2 Space)	14.75"	50lbs
U3	5.25" (3 Space)	14.75"	70lbs
U4	7" (4 Space)	15.5"	85lbs
RSH-4A	7.5" (4 Space), (Custom Order)	11.5, 15.5, 17.5 or 20.5"	varies

VENTED

MODEL	HEIGHT	DEPTH	CAPACITY
UTR1	1.75" (1 Space)	10"	25lbs
U317	5.25" (3 Space)	17.75"	60lbs
U2MS	3.5" (2 Space)	18"	50lbs

SPECIALTY



MODEL	DEPTH
VSA-1626	16-26"

Drawers



- Fully enclosed top to keep contents in
- Full extension ball bearing slides extend 14"
- Inside dimensions: 15-7/8 x 14-1/2"

MODEL	HEIGHT	CONSTRUCTION
UD2	3.5" (2 Space)	Black powder-coat finish
UD3	5.25" (3 Space)	Black powder-coat finish
D3	5.25" (3 Space)	Black anodized finish
UD4	7" (4 Space)	Black powder-coat finish

