

## PATCH PANELS

- Fully preloaded with standard 110 punchdown type terminals
- Accommodate T568A & T568B wiring configurations.
- Also compatible with RJ11/RJ12 plugs for applications where voice and data are combined in the same box or location

### CAT5e

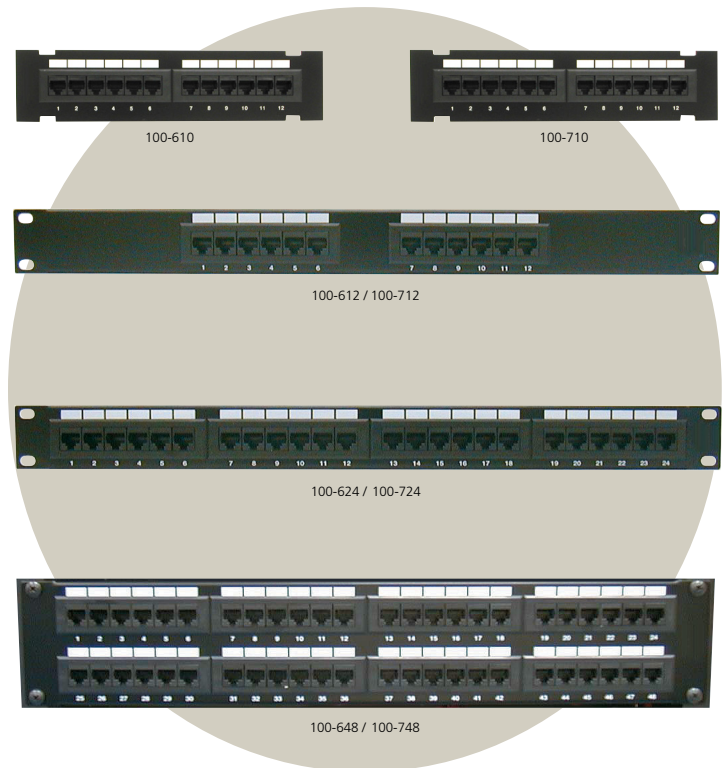


MODEL	HEIGHT	WIDTH	# OF OUTLETS
100-610*	1.75" (1 Space)	10"	12
100-612	1.75" (1 Space)	19"	12
100-624	1.75" (1 Space)	19"	24
100-648	3.5" (3 Space)	19"	48

### CAT6

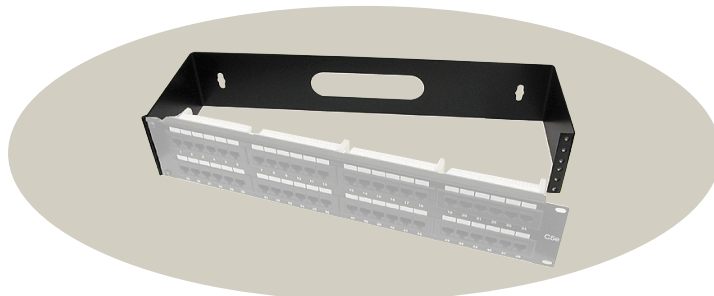
MODEL	HEIGHT	WIDTH	# OF OUTLETS
100-710*	1.75" (1 Space)	10"	12
100-712	1.75" (1 Space)	19"	12
100-724	1.75" (1 Space)	19"	24
100-748	3.5" (3 Space)	19"	48

\*100-610 and 100-710 not compatible with 19" Racks



## PATCH PANEL WALL MOUNTS

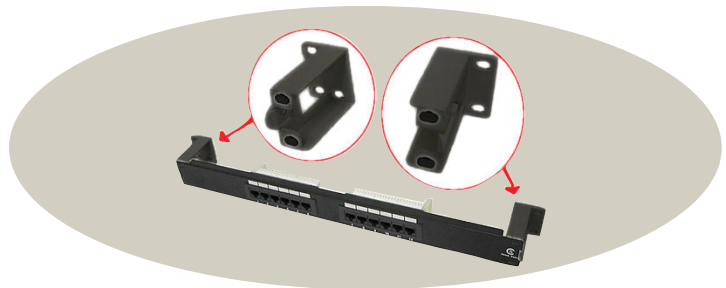
### Hinged Panel Mounts



- For use with standard 19" rackmount patch panels and components with 2U (two rack spaces / 3.5" high)
- Black powder-coated finish with cutouts for cable pass-through

MODEL	HEIGHT	DEPTH
100-682	3.5" (2 Space)	6"
100-685	3.5" (2 Space)	Adjustable 9-13.5"

### Mounting Brackets



- The most cost effective method for wall mounting patch panels
- For use with standard 19" rackmount patch panels and components with 1U (one rack space / 1.75" high)
- Black plastic with side cable pass through & includes mounting hardware, Pkg/2

MODEL	HEIGHT	DEPTH
100-691-2	1.75" (1 Space)	2.375"



See page 50 for Networking Cable

