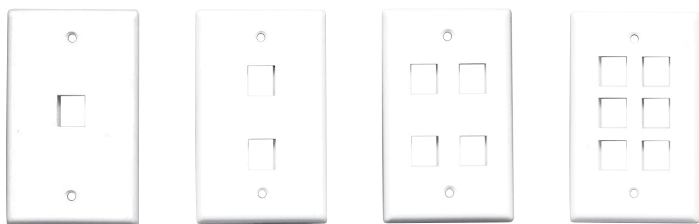


## WALL PLATES



- Plastic wall plates
- For keystone jacks, inserts and accessories



MODEL	DESCRIPTION
100-401	Blank Wall Plate - 1 Port
100-402	Blank Wall Plate - 2 Ports
100-403	Blank Wall Plate - 3 Ports
100-404	Blank Wall Plate - 4 Ports
100-406	Blank Wall Plate - 6 Ports

## RECEPTACLE BOXES



- Plastic receptacle boxes
- For keystone jacks, inserts and accessories



MODEL	DESCRIPTION
100-411	RJ45 Box - Surface Mount, Single Port
100-412	RJ45 Box - Surface Mount, Dual Ports

## COUPLERS

- Straight-through RJ45 CAT5e coupler, data joiner
- 8 conductors straight-through



MODEL	DESCRIPTION
100-560	RJ45 Coupler - CAT5E, White

## WALL PLATE MOUNTING

- Single gang junction box, designed for surface mounting
- Threaded brass inserts



MODEL	DESCRIPTION
100-415	Surface Mount Junction Box, 1 Gang, White

## RJ45 MODULAR PLUGS

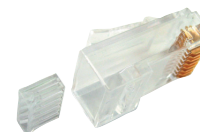
- RJ45 plugs w/ 8 conductors
- 50μ gold-plated 3-point contacts
- Use with round (UTP) solid cable, data or voice



### CAT5e



MODEL	TYPE	POSITIONS/CONTACTS	PKG QTY
100-208C5-10	CAT5e	8P/8C	10
100-208C5-100	CAT5e	8P/8C	100

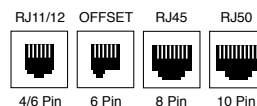


### CAT6



MODEL	TYPE	POSITIONS/CONTACTS	PKG QTY
100-208C6-10	CAT6	8P/8C	10
100-208C6-100	CAT6	8P/8C	100

## MODULAR PLUGS



- Modular telephone plugs with gold plated contacts
- For use with flat stranded cables

MODEL	TYPE	POSITIONS/CONTACTS	PKG QTY
100-104-10	RJ11	6P/4C	10
100-104-100	RJ11	6P/4C	100
100-106-10	RJ12	6P/6C	10
100-106-100	RJ12	6P/6C	100
100-108-10	RJ45	8P/8C	10
100-108-100	RJ45	8P/8C	100
100-110-10	RJ50	10P/10C	10

See page 43 for  
Data/Telephone Crimp Tools

