

DIGITAL PANEL METERS

LCD Digital Display

Ideal for displaying voltage, current and more.
Selectable range and auto polarity.



PM-1028B



PM-328

MODEL	DISPLAY	FIGURE HEIGHT	SUPPLY VOLTAGE	DIMENSIONS	INPUT IMPEDANCE	RANGES
CX101BG	3.5 Digit	12.7mm	5VDC Common Ground	61 x 25mm	>100M Ohms	20V, 200V, 500V
PM-1028A	3.5 Digit	21mm	9VDC Independent	85 x 41mm	>100M Ohms	200mV, 20V, 200V, 500V
PM-1028B	3.5 Digit	21mm	5VDC Common Ground	85 x 41mm	>100M Ohms	200mV, 20V, 200V, 500V
PM-128A	3.5 Digit	13mm	9VDC Independent	68 x 38mm	>100M Ohms	200mV, 20V, 200V, 500V
PM-128E	3.5 Digit	13mm	5VDC Common Ground or 9VDC Independent	68 x 44mm	>10M Ohms	200mV, 20V, 200V, 500V
PM-328	4.5 Digit	11mm	9VDC Independent	68 x 44mm	>100M Ohms	200mV, 2V, 20V, 200V, 500V

LED Digital Display

Ideal for displaying voltage, current and more.
Selectable range and auto polarity.



CX102B



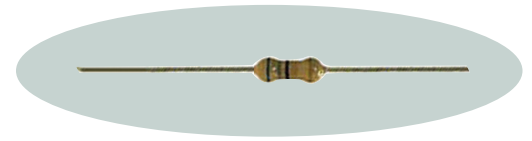
PM-1029A

MODEL	DISPLAY	FIGURE HEIGHT	SUPPLY VOLTAGE	DIMENSIONS	INPUT IMPEDANCE	RANGES
CX102B	3.5 Digit	14.2mm	5VDC Common Ground	85 x 41mm	>10M Ohms	20V, 200V, 500V
PM-1029A	3.5 Digit	20.3mm	9VDC Independent	85 x 41mm	>10M Ohms	200mV, 20V, 200V, 500V
PM-1029B	3.5 Digit	20.3mm	5VDC Common Ground	85 x 41mm	>10M Ohms	200mV, 20V, 200V, 500V

Panel Meter Resistor Kit

- Package of 6 resistors for scaling PM Series digital panel meters
- Values: 1K, 10K, 100K, 9.9M, 9.99M, 9.999M

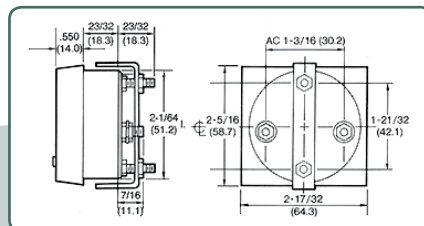
PM-CX-RES



ANALOG PANEL METERS

850 Series - 2.5" (64mm)

- Accuracy: +/- 5%
- Polystyrene case with metal scales
- Jeweled bearing
- Lance-type pointers
- DC models use moving magnet technology
- AC models use double vane repulsion technology



MODEL	DESCRIPTION
AC	
8406Z	AC Voltage 0-150 V
8407Z	AC Voltage 0-300 V
8503Z	AC Current 0-5 A
8504Z	AC Current 0-10 A
8505Z	AC Current 0-30 A
8506Z	AC Current 0-50 A
8507Z	AC Current 0-80 A
8508Z	AC Current 0-15 A
DC	
8107Z	DC Voltage 0-10 V
8108Z	DC Voltage 0-15 V
8109Z	DC Voltage 0-25 V
8122Z	DC Voltage 0-50 V
8203Z	DC Current 0-5 A
8205Z	DC Current 0-10 A
8206Z	DC Current 0-15 A
8207Z	DC Current 0-25 A
8208Z	DC Current 0-50 A
8336Z	DC Current 0-1 mA